

# WATER-COOLED Air Conditioners



## FEATURES

- Water-Cooled air conditioners are for especially hostile, dirty environments or where temperatures exceed 125°F/52°C. Varied sizes, capacities and mounting options provide a wide range of choice.
- 33WC and 47WC Series are side-mount models, and the LBI IWC is a rack mount unit.
- 33WC will mount to 12" deep enclosure.
- Operate quietly, consume low power, no condenser blower or filter to clean, and have an extra-long operating life.
- Add no heat to surroundings and require no fresh air ducting.
- Water regulating valve and water interruption shut-down switch is standard.
- 100% functionally tested.
- Mounting gaskets, drawings and instruction manual furnished.
- All units use a CFC-free or environmentally safe refrigerant that is universally accepted.

## NEMA12

NEMA 12 per UL 50 Type 12 approval on all models.

## OTHER UNITS TO CONSIDER

33 Water-Cooled: Genesis™ 33NSM, pg. 32

47 Water-Cooled: 47N Series, pg. 32

## OPTIONS (SEE PGS. 80-81)

	33WC	47WC	LBI IWC
Thermostat Package	✓	✓	✓
Thermostat/Malfunction Package	✓	✓	✓
Condensate Evaporator Package	✓	✓	N/A
Special Voltage Package	✓	✓	✓
Corrosive Environment Package*	✓	✓	✓
Stainless Steel Package*	✓	✓	✓
Heater Package	✓	✓	✓

\* Please refer to pgs. 36-39 for our air conditioners that have been engineered and manufactured specifically for demanding applications.

### 33WC Series

4000 BTU/Hr. (1172 Watts)

H x W x D: 34.13" (867) x 12.38" (314) x 8.75" (222)

Model	Voltage	Hz	Full Load Amps	Phase	BTU/Hr @ 125°F Enclosure Air Temp	Max °F/°C Water Temp	Max Water Usage (GPM)*	Shipping Weight Lbs/Kgs
33-0416-GW0XX	115	50/60	6.0/5.8	I	3800/4000	90/32	0.5	86/39
33-0426-GW0XX	230	50/60	3.3/3.2	I	3800/4000	90/32	0.5	86/39

-XX will be replaced with a two-digit number designating all desired options. Consult the factory for specific model numbers.  
 \*Rated at 90°F inlet water and full air conditioning load. Actual usage will vary.

### 47WC Series

8000-12000 BTU/Hr. (2344-3516 Watts)

H x W x D: 47.25" (1200) x 19" (483) x 10" (254)

Model	Voltage	Hz	Full Load Amps	Phase	BTU/Hr @ 125°F Enclosure Air Temp	Max °F/°C Water Temp	Max Water Usage (GPM)*	Shipping Weight Lbs/Kgs
47-0815-W0XX	115	50/60	10.0	I	6600/8000	90/32	2.0	160/73
47-0816-W0XX	115	60	10.0	I	8000	90/32	2.0	155/70
47-0825-W0XX	230	50	5.5	I	8000	90/32	2.0	155/70
47-0826-W0XX	230	60	5.0	I	8000	90/32	2.0	155/70
47-1215-W0XX	115	50/60	14.0	I	10000/12000	90/32	2.0	160/73
47-1216-W0XX	115	60	14.0	I	12000	90/32	2.0	155/70
47-1225-W0XX	230	50	7.0	I	12000	90/32	2.0	155/70
47-1226-W0XX	230	60	7.0	I	12000	90/32	2.0	155/70

-XX will be replaced with a two-digit number designating all desired options. Consult the factory for specific model numbers.  
 \*Rated at 90°F inlet water and full air conditioning load. Actual usage will vary.  
 Most models available with Hz selector switch, if desired. Contact factory.  
 The 50/60 Hz units, because of the addition of an autotransformer, cost more than straight 60 Hz models. Units wired for 50 Hz operation when shipped. A single internal wiring change is required for 60 Hz operation.

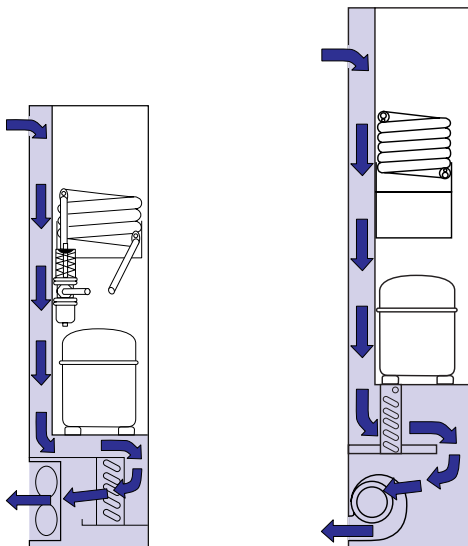
### LBIWC Series

4000 BTU/Hr. (1172 Watts)

H x W x D: 10.47" (266) x 19" (483) x 19.63" (499)

Model	Voltage	Hz	Full Load Amps	Phase	BTU/Hr @ 125°F Enclosure Air Temp	Max °F/°C Water Temp	Max Water Usage (GPM)*	Shipping Weight Lbs/Kgs
LBI1-0416-GW0XX	115	50/60	9.0	I	3300/4000	90/38	1.0	105/48
LBI1-0426-GW0XX	230	50/60	4.5	I	3300/4000	90/38	1.0	100/45

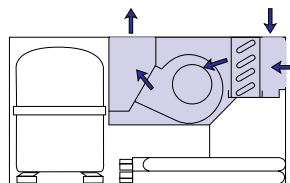
-XX will be replaced with a two-digit number designating all desired options. Consult the factory for specific model numbers.  
 \*Rated at 90°F inlet water and full air conditioning load. Actual usage will vary.



■ Clean air flow

#### McLEAN MIDWEST CLOSED-LOOP COOLING

Within the air conditioner, the recirculated clean enclosure air is kept separate from the ambient airflow system. This protects the electronic controls and prevents shutdowns caused by heat, humidity, dust and other contaminants.



**AIR CONDITIONERS**  
**33WC, 47WC, LBIWC**  
**WATER-COOLED**

# 33WC SERIES

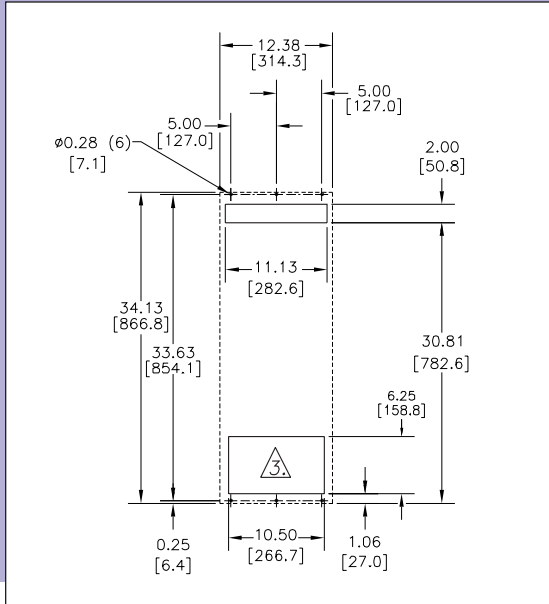
## CUT-OUT NOTES

1. Cord is routed through the 2" x 11.13" return air opening (top).

2. Dash lines represent air conditioner.

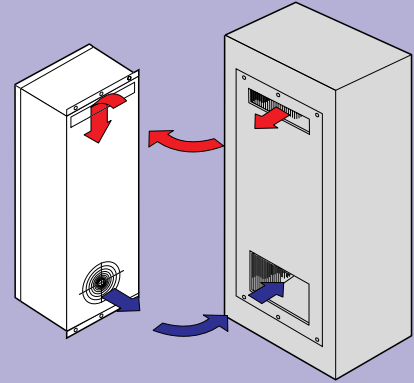
3. Bottom opening will accommodate air conditioner or heat exchanger.

4. Cut-out dimensions for standard product only.



## SIDE MOUNT TO ENCLOSURE

For NEMA type 12 enclosure, interfacing air-out and air-in openings are required in the enclosure wall.



# 47WC SERIES

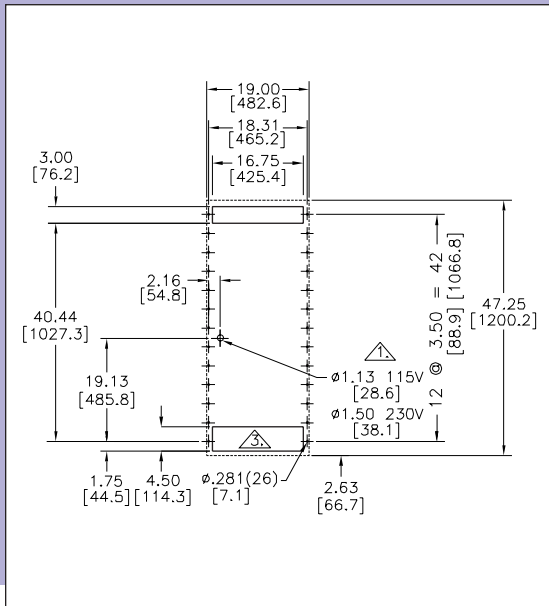
## CUT-OUT NOTES

1. This cord hole may be deleted if the service cord is routed through the 3" x 16.75" return air opening.

2. Dash lines represent air conditioner.

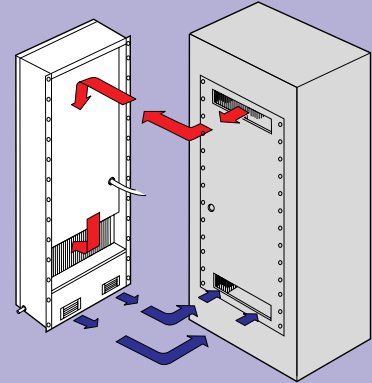
3. This cut-out accommodates units to 12000 BTU/Hr.

4. Cut-out dimensions for standard product only.



## SIDE MOUNT TO ENCLOSURE

For NEMA type 12 enclosure, interfacing air-out and air-in openings are required in the enclosure wall.



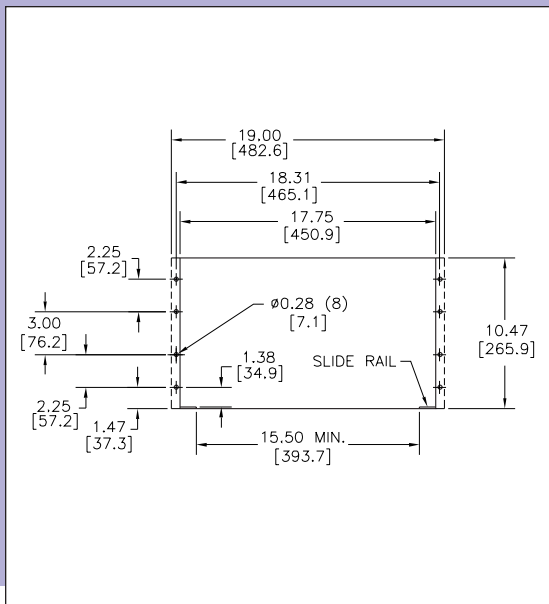
# LBI IWC SERIES

## CUT-OUT NOTES

1. Dash lines represent air conditioner.

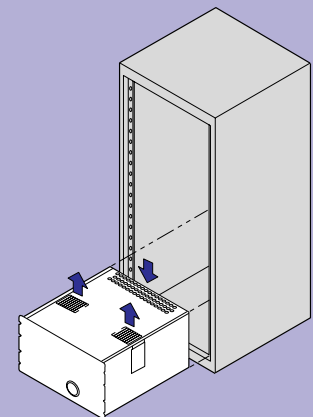
2. Entire weight of air conditioner is not intended to be supported by the mounting flanges. Slide rails should be installed.

3. Cut-out dimensions for standard product only.



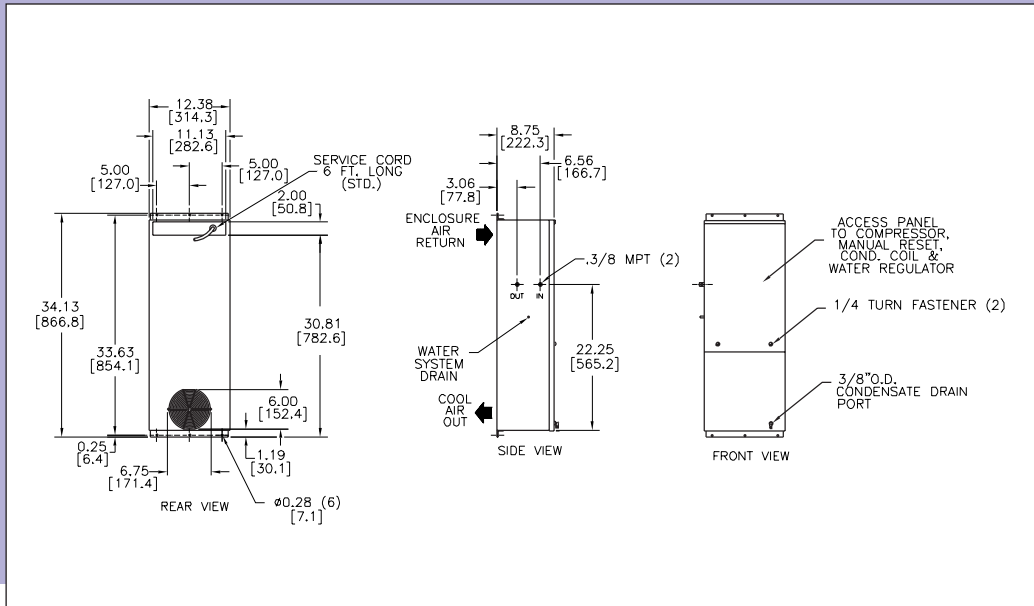
## RACK MOUNT TO ENCLOSURE

Unit may be rack mounted near the bottom of the enclosure as shown, or use cut-out drawing for NEMA type 12 enclosures.



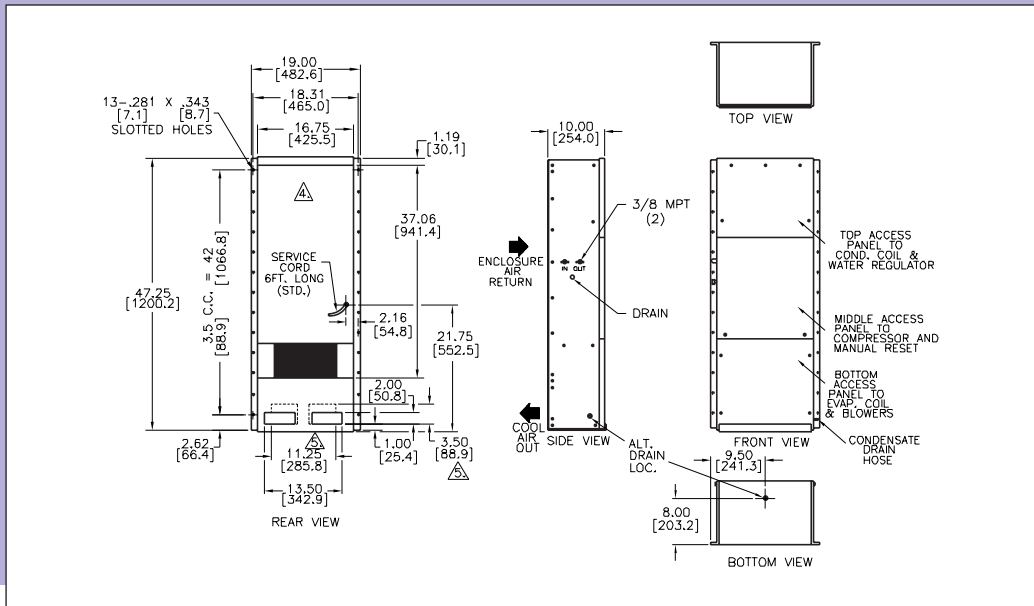
## DESIGN NOTES

1. Gasket kit for mounting to enclosure included.
2. Service cord terminated with appropriate plug cap.
3. Condensate drain hose included.



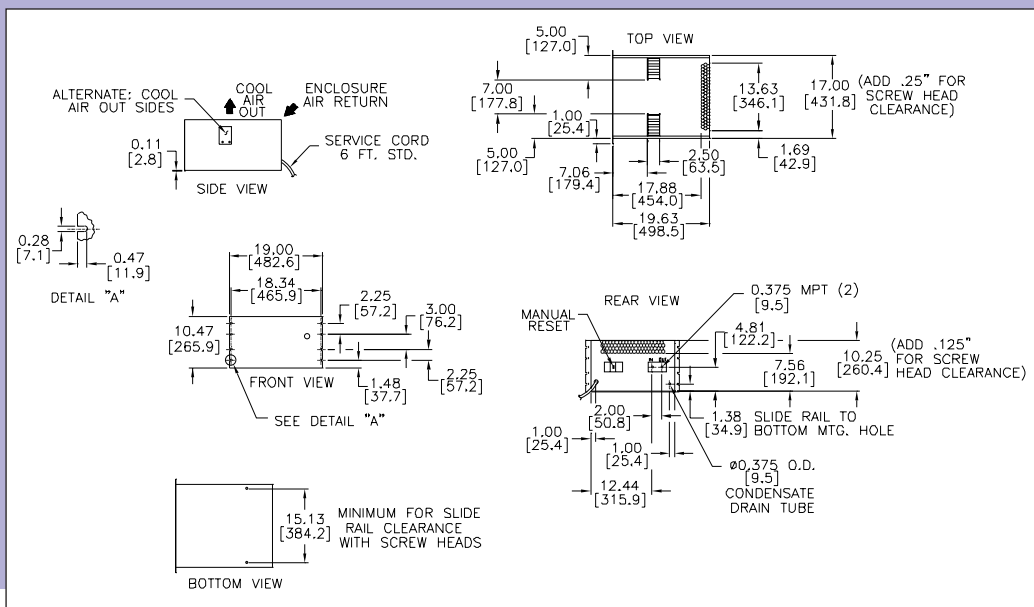
## DESIGN NOTES

1. Gasket kit for mounting to enclosure included.
2. Service cord terminated with appropriate plug cap.
3. Condensate drain hose included.
4. This 37.06" x 16.75" area is recessed 1.44" from rear surface (referred to as the "plenum").
5. Cool air outlet dimensions for 8000-12000 BTU/Hr units.



## DESIGN NOTES

1. Gasket kit for mounting to enclosure included.
2. Service cord terminated with appropriate plug cap.
3. Condensate drain hose included.



AIR CONDITIONERS  
33WC, 47WC, LB1IWC

WATER-COOLED