

# MID-SIZE Air Conditioners

2000-6000 BTU/HR.  
586-1758 WATTS



28



36

## FEATURES

- Genesis™ 28 stock models are equipped with a thermostat control that offers convenient digital display of enclosure temperature and high temperature alarm (125°F/52°C). Flashing display indicates alarm condition. 36 Series stock models have an electro-mechanical thermostat. Genesis™ 28 stock models are UL/CUL and CE standard. Both Series include EMI/RFI noise suppressor on stock models.
- New Genesis™ 28 models offer: improved aesthetics with no changes to the major internal components so airflow and performance are the same as the corresponding Slimboy models; unique condensate management system evaporates moisture from enclosure and eliminates drain tubes, buckets and wet floors in typical applications; and EZ Mount flanges simplify installation to a two-step, one-person job.
- Genesis™ units are directly interchangeable with the comparable Slimboy Series. A field retrofit plate is needed only when mounting the Genesis™ 28 to an old Slimboy model cutout. Plate is free upon request. For Slimboy 28 models with side mounting rails, field retrofit plate part number is 28-plate. For other mounting configurations, contact the factory.
- The Mid-Size models offer universal sizes and a broad performance range making them some of the most popular in the industry.
- High CFM ball-bearing centrifugal blowers are ideal for densely packaged enclosures.
- Most components accessible by removing air filter.
- 100% functionally tested.
- Mounting gaskets, drawings and instruction manual furnished.
- All units use a CFC-free or environmentally safe refrigerant that is universally accepted.



UL/CUL listing and CE standard on all Genesis™ 28 models. Certain 36 models available with UL listing. (UL File SA6453). Please contact the factory. NEMA 12 per UL 50 type 12 approval on all models.

## OTHER UNITS TO CONSIDER

Genesis™ 28: CR29, pg. 16; CR29 Stainless Steel, pg. 36  
36 Series: Genesis™ 36N, pg. 32

## OPTIONS (SEE PGS. 80-81)

	28	36
Thermostat Package	✓	✓
Thermostat/Malfunction Package	✓	✓
Condensate Evaporator Package	**	✓
Special Voltage Package	✓	✓
Outdoor Package*	✓	✓
Heater Package	✓	✓
Corrosive Environment Package*	✓	✓
Stainless Steel Package*	✓	✓

\* Please refer to pgs. 36-39 for our air conditioners that have been engineered and manufactured specifically for demanding applications.

\*\* A condensate management system is standard. See features.

## GENESIS™ 28 Series

2000-6000 BTU/Hr. (586-1758 Watts)

H x W x D: 28.50" (724) x 17" (432) x 11.33" (288)

Model	Voltage	Hz	Full Load Amps	Phase	BTU/Hr @ Max Amb Temp	Max Amb Temp °F/°C	Shipping Weight Lbs/Kgs
M28-0216-G013	STOCK 115	50/60	9.8/9.0	I	2200/2200	125/52	98/45
M28-0216-G0XX	115	50/60	9.8/9.0	I	2200/2200	125/52	98/45
M28-0226-G004	STOCK 230	50/60	5.0/4.5	I	2200/2200	125/52	98/45
M28-0226-G0XX	230	50/60	5.0/4.5	I	2200/2200	125/52	98/45
M28-0416-G007	STOCK 115	50/60	14.6/14.0	I	3800/4000	125/52	116/53
M28-0416-G0XX	115	50/60	14.6/14.0	I	3800/4000	125/52	116/53
M28-0426-G032	STOCK 230	50/60	7.4/6.9	I	3800/4000	125/52	116/53
M28-0426-G0XX	230	50/60	7.4/6.9	I	3800/4000	125/52	116/53
M28-0616-0XX	115	50/60	15.0/15.0	I	5400/6000	125/52	120/55
M28-0626-0XX	230	50/60	7.3/7.3	I	5400/6000	125/52	120/55

-XX will be replaced with a two-digit number designating all desired options. Consult the factory for specific model numbers. An "M" in the model number identifies the new Genesis™ Series of air conditioners.

## 36 Series

6000 BTU/Hr. (1758 Watts)

H x W x D: 36.69" (932) x 19" (483) x 10.88" (276)

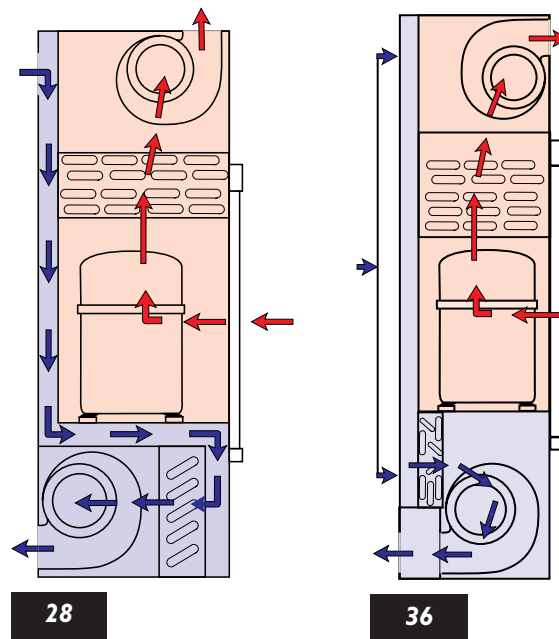
Model	Voltage	Hz	Full Load Amps	Phase	BTU/Hr @ Max Amb Temp	Max Amb Temp °F/°C	Shipping Weight Lbs/Kgs
36-0616-136	STOCK 115	60	14.0	I	6000	125/52	129/59
36-0615-1XX	115	50/60	14.0	I	5000/6000	125/52	131/59
36-0616-1XX	115	60	14.0	I	6000	125/52	126/57
36-0625-1XX	230	50	7.0	I	6000	125/52	126/57
36-0626-113	STOCK 230	60	7.0	I	6000	125/52	126/57
36-0626-1XX	230	60	7.0	I	6000	125/52	126/57

-XX will be replaced with a two-digit number designating all desired options. Consult the factory for specific model numbers. Most models available with Hz selector switch, if desired. Contact factory.

The 50/60 Hz units, because of the addition of an autotransformer, cost more than straight 60 Hz models. Units wired for 50 Hz operation when shipped. A single internal wiring change is required for 60 Hz operation.

### McLEAN MIDWEST CLOSED-LOOP COOLING

Within the air conditioner, the recirculated clean enclosure air is kept separate from the ambient airflow system. This protects the electronic controls and prevents shutdowns caused by heat, humidity, dust and other contaminants.



# GENESIS™ 28 Series

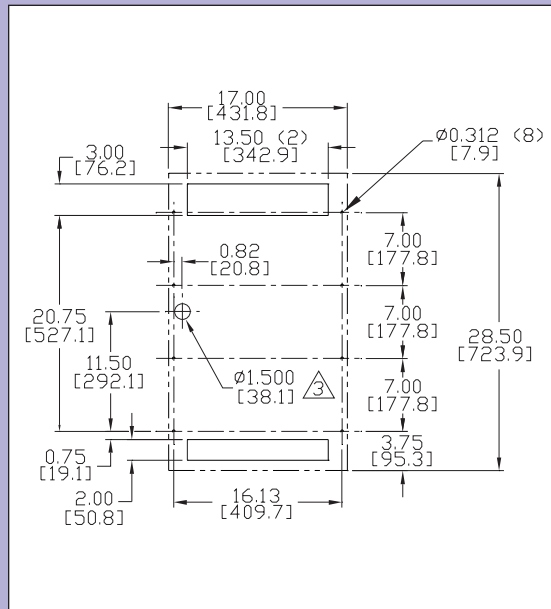
## CUT-OUT NOTES

1. Dash lines represent air conditioner.

2. Cut-out dimensions for standard product only.

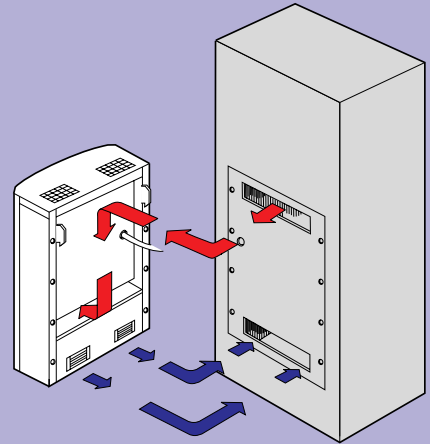
3. This hole may be deleted if the service cord is routed through the 3" x 13.50" return air opening.

4. Full-size mounting template provided.



## SIDE MOUNT TO ENCLOSURE

For NEMA type 12 enclosure, interfacing air-out and air-in openings are required in the enclosure wall.



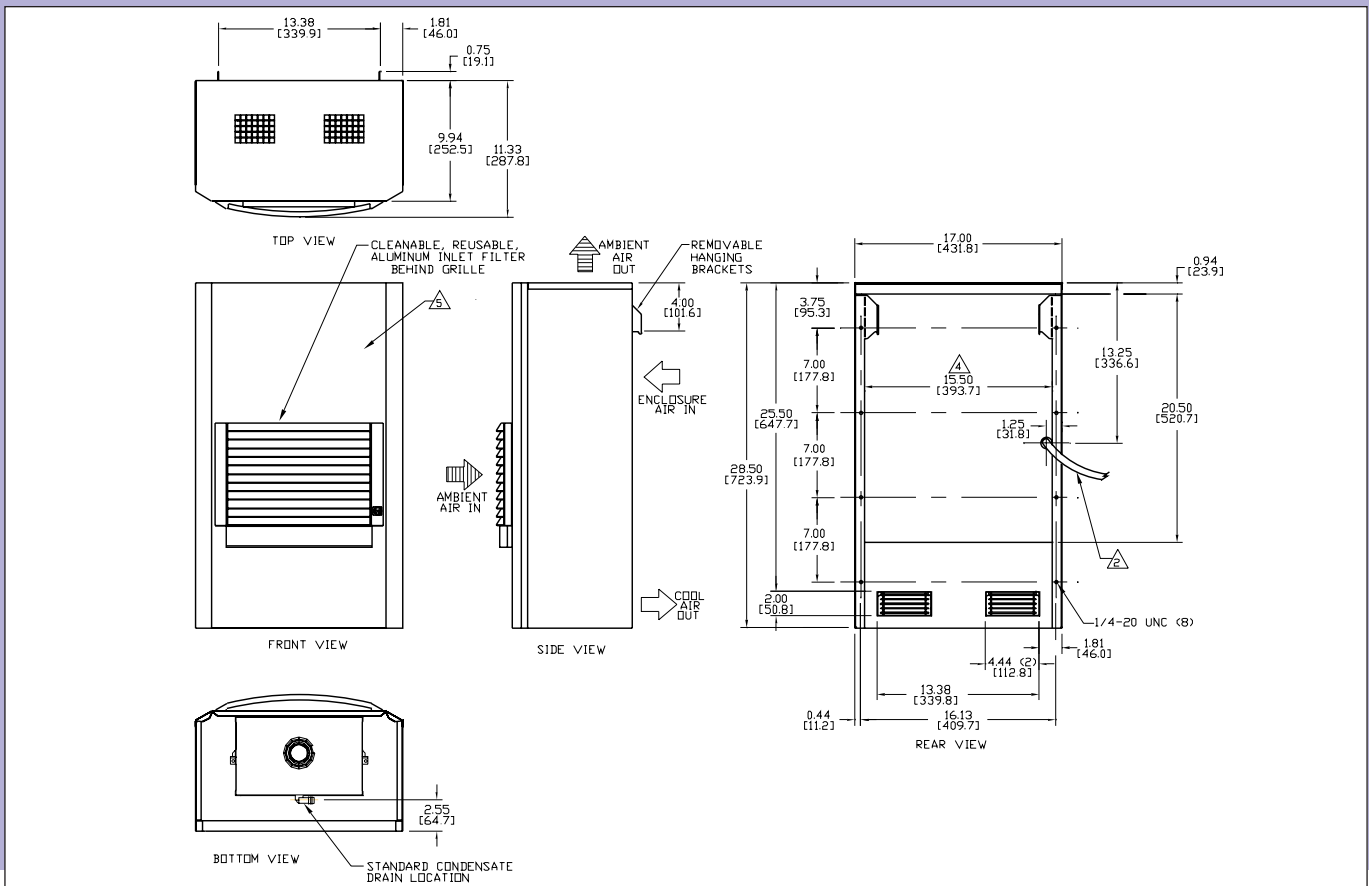
## DESIGN NOTES

1. Gasket kit for mounting to enclosure included.

2. Service cord.

4. This 20.50" x 15.50" area is recessed 1.00" from rear surface (referred to as the "plenum").

5. Condenser air discharge out front is optional.



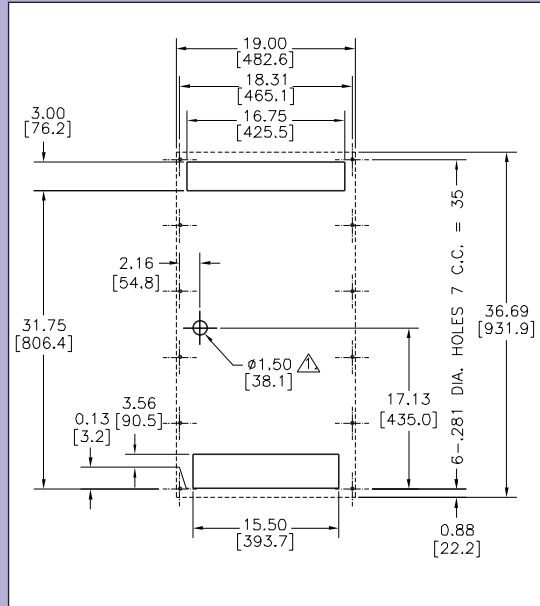
# 36 Series

## CUT-OUT NOTES

1. This cord hole may be deleted if the service cord is routed through the 3" x 16.75" return air opening.

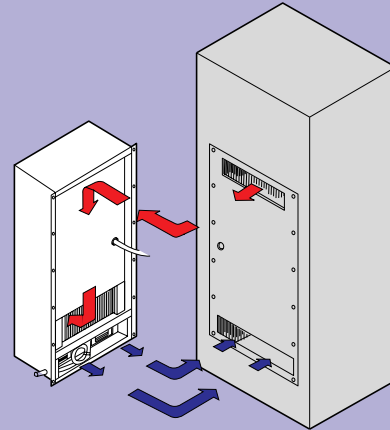
2. Dash lines represent air conditioner.

3. Cut-out dimensions for standard product only.



## SIDE MOUNT TO ENCLOSURE

For NEMA type 12 enclosure, interfacing air-out and air-in openings are required in the enclosure wall.



## DESIGN NOTES

1. Gasket kit for mounting to enclosure included.

2. Service cord terminated with appropriate plug cap.

3. This 30.06" x 16.75" area is recessed .94" from rear surface (referred to as the "plenum").

