

8000 and 12000 BTUs/Hr (2300 & 3500 Watts)

Key Features



Indoor Model Shown

- Nominal cooling capacity 8000 & 12000 BTUs/Hr (2300 & 3500 Watts)
- Energy efficient rotary compressor
- R134a earth-friendly refrigerant and RoHS compliant
- Models for 115, 230 and 460 3-phase AC volt power input
- UL listed to save customers time and money with agency approvals
- Cut-out adapter options for enclosures with McLean Genesis and T-Series air conditioners, enabling users to easily transition to the new unit
- Exterior and partial recessed mounting options
- Outdoor model operating temperature range from -40°F/-40°C to 131°F/55°C
- UL Type 12/3R/4 and IP54/55 rated. Telcordia GR-487 capable
- Type 4X stainless steel option
- Cleanable reusable aluminum mesh filter to protect coils for maximum cooling performance
- Attractive industrial design with minimal use of visible fasteners
- RAL 7035 light gray powder-coat paint in a semi-texture finish
- Reliable mechanical thermostat on enclosure side of the unit. Indoor Air Conditioner models include digital display on ambient side
- Dual condenser-side air movers for performance redundancy
- Galvanized sheet-metal cover for rugged factory and outdoor environments
- Easy-mount flanges and up to 30 lbs (14 kg) lighter for simple installation
- Mounting hardware, gaskets and user manual furnished with the unit
- Every unit functionally tested before shipping
- Standard Indoor Air Conditioner models include the above features, plus:
 - ▶ Active condensate management with heater strip
 - ▶ Power-off relay for door switch and other system requirements
 - ▶ Malfunction switch
- Standard Outdoor Air Conditioner models include the above features, plus:
 - ▶ Telcordia GR-487 capable
 - ▶ Corrosion-resistant components
 - ▶ Malfunction switch
 - ▶ Compressor heater
 - ▶ Head pressure control
 - ▶ 2000 Watt enclosure heater

McLeanParts.net

5736 North Michigan Road

Indianapolis, IN 46228

317-257-6811

317-257-1590 fax

Sales@McLeanParts.net

TYPE 12/3R/4 TYPE 4X optional



SpectraCool™ Air Conditioner

Indoor and Outdoor Base Models

8000 and 12000 BTUs/Hr (2300 & 3500 Watts)

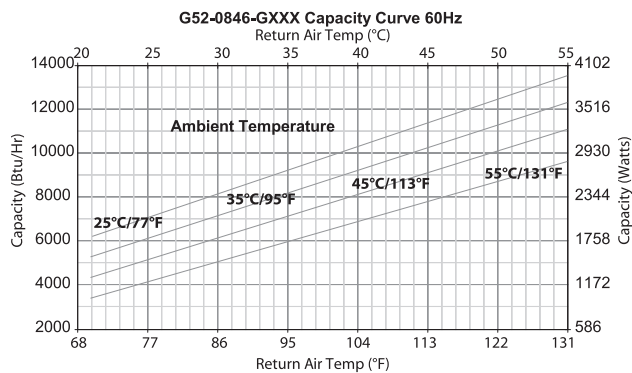
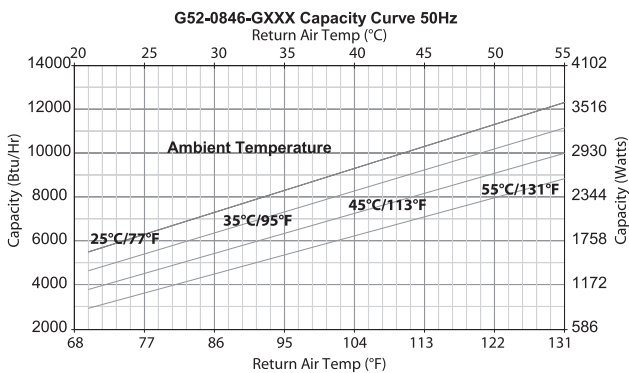
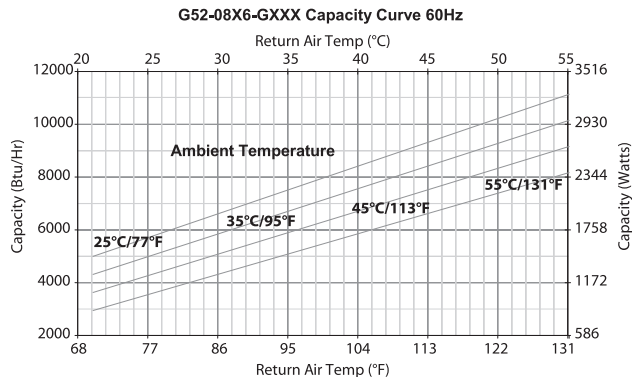
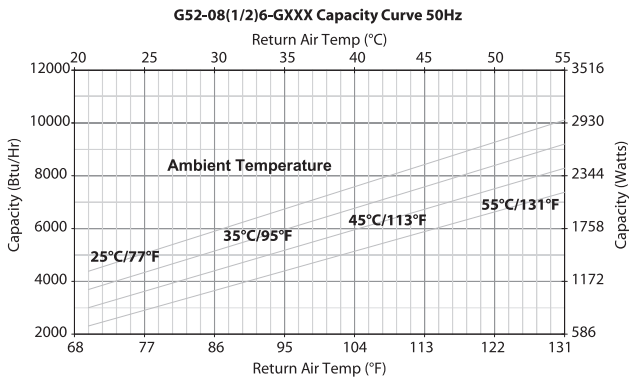
Performance Data

MODEL NUMBER						
Indoor	G52-0816-G050	G52-0826-G050	G52-0846-G050	G52-1216-G050	G52-1226-G050	G52-1246-G050
Outdoor	G52-0816-G150	G52-0826-G150	G52-0846-G150	G52-1216-G150	G52-1226-G150	G52-1246-G150
COOLING PERFORMANCE						
Nominal:						
BTUs/Hr	8000	8000	8000	12000	12000	12000
Watts	2300	2300	2300	3500	3500	3500
At 131°F / 131°F (55°C / 55°C):						
BTUs/Hr	7300 / 8200	7300 / 8200	8800 / 9800	12000 / 12500	12000 / 12500	11100 / 12000
Watts	2139 / 2403	2139 / 2403	2578 / 2871	3516 / 3662	3516 / 3662	3252 / 3516
At 95°F / 95°F (35°C / 35°C):						
BTUs/Hr	6000 / 6800	6000 / 6800	7400 / 8200	9900 / 10700	9900 / 10700	9900 / 10700
Watts	1758 / 1992	1758 / 1992	2168 / 2402	2900 / 3135	2900 / 3135	2900 / 3135
Refrigerant	R134a	R134a	R134a	R134a	R134a	R134a
Refrigerant Charge (ounces/grams)	24 / 199	24 / 199	24 / 199	38 / 315	38 / 315	38 / 315
Operating Temperature Range:						
Maximum (°F / °C)	131 / 55	131 / 55	131 / 55	131 / 55	131 / 55	131 / 55
Indoor Minimum (°F / °C)	50 / 10	50 / 10	50 / 10	50 / 10	50 / 10	50 / 10
Outdoor Minimum (°F / °C)	-40 / -40	-40 / -40	-40 / -40	-40 / -40	-40 / -40	-40 / -40
Air Flow at 0 Static Pressure:						
Internal loop 50 Hz (CFM / M ³ /Hr)	285 / 484	285 / 484	285 / 484	287 / 487	287 / 487	287 / 487
External loop 50 Hz (CFM / M ³ /Hr)	650 / 1104	650 / 1104	650 / 1104	635 / 1078	635 / 1078	635 / 1078
Internal loop 60 Hz (CFM / M ³ /Hr)	310 / 527	310 / 527	310 / 527	305 / 518	305 / 518	305 / 518
External loop 60 Hz (CFM / M ³ /Hr)	700 / 1189	700 / 1189	700 / 1189	650 / 1104	650 / 1104	650 / 1104
Max. Heater Watts (Outdoor Models):	2000	2000	NA	2000	2000	NA
ELECTRICAL DATA						
Rated Voltage	115	230 / 208-230	400 / 460 3~	115	230 / 208-230	400 / 460 3~
Frequency (Hertz)	50 / 60	50 / 60	50 / 60	50 / 60	50 / 60	50 / 60
Operating Range	+/- 10%	+/- 10%	+/- 10%	+/- 10%	+/- 10%	+/- 10%
Max. Power Consumption (Watts)	1250 / 1415	1250 / 1415	806 / 957*	2100 / 2427	1830 / 2130	910 / 1106*
Max. Nominal Current (Amps)	11.2 / 12.3	5.6 / 7.0-6.2	3.1 / 3.2	16.1 / 21.0	9.1 / 10.6-9.5	3.5 / 3.7
Starting Current (Amps)	48	27	16	57	38	16
Agency Approvals	cUL Listed CE Others available upon request					
Power Input Description	IEC plug with 10-ft/3 m cord	IEC plug with 10-ft/3 m cord	Terminal block	IEC plug with 10-ft/3 m cord	IEC plug with 10-ft/3 m cord	Terminal block
ENCLOSURE PROTECTION						
UL Type	Type 12/3R/4 standard		4X stainless steel optional			
International Rating	IP54/55 standard					
CONTROLLER						
Description	Basic mechanical thermostat with digital display					
Thermostat Location	Enclosure side on all base models					
Digital Display Location:						
Indoor Models	Ambient side					
Outdoor Models	Enclosure side					
Factory Thermostat Setting (°F / °C)	80 / 27					
SOUND LEVEL						
At 1.5 meters	68dBA					
UNIT CONSTRUCTION						
Material	Galvanized sheet metal standard			Stainless steel optional		
Finish	Powder coat RAL 7035 light gray semi-textured standard			Other colors available		
ACCESSORIES						
Cleanable Re-Usable Filter	Aluminum mesh			Part #10-1000-103		
Indoor Cut-Out Adapter	Enables SpectraCool to be mounted to a Genesis M52 air conditioner cut-out				Part #52-6216-01	
Outdoor Cut-Out Adapter	Enables SpectraCool to be mounted to a T-Series T50 air conditioner cut-out				Part #52-6216-03	
UNIT DIMENSIONS						
Height (in / mm)	52.69 / 1338					
Width (in / mm)	17.12 / 435					
Depth (in / mm)	11.66 / 296					
Weight (lb / kg)	128 / 58.1	128 / 58.1	138/62.6	131 / 59.4	132 / 59.4	141 / 64.0

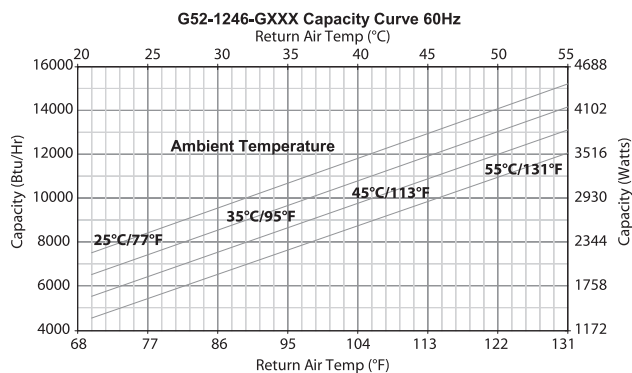
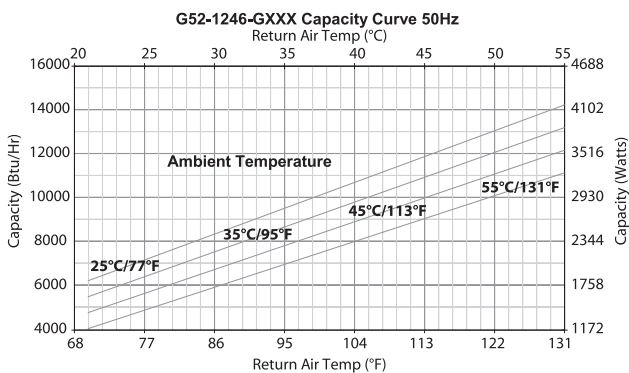
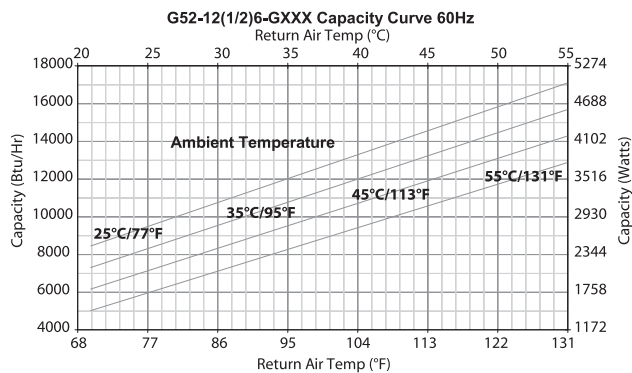
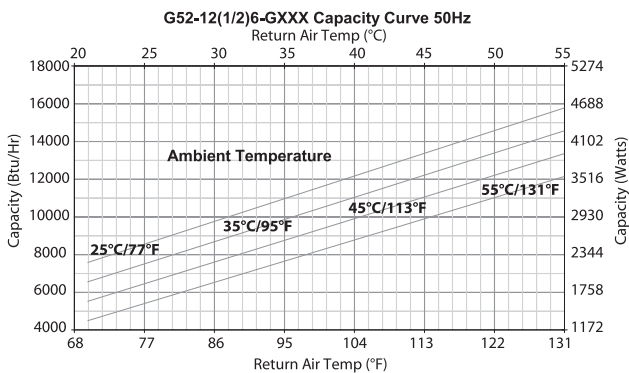
*Watts based on .65 power factor.



8000 BTUs/Hr (2300 Watts)



12000 BTUs/Hr (3500 Watts)



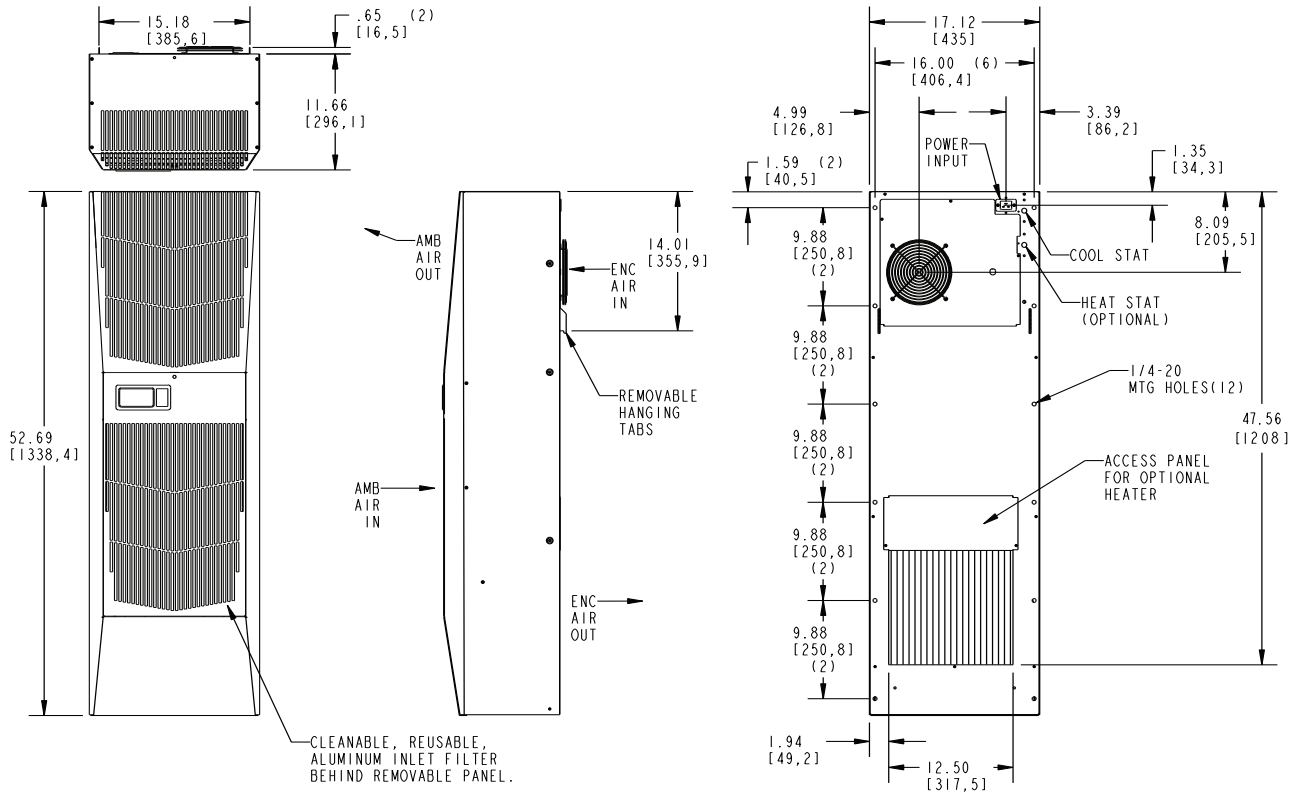
SpectraCool™ Air Conditioner

Indoor and Outdoor Base Models

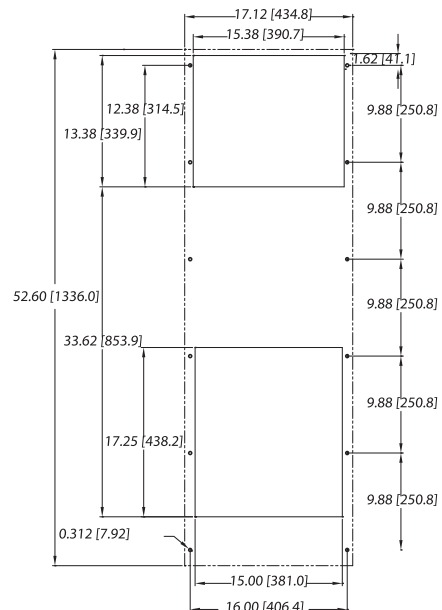


8000 and 12000 BTUs/Hr (2300 & 3500 Watts)

Engineering Drawings



SpectraCool Cut-out Pattern



McLeanParts.net
 5736 North Michigan Road
 Indianapolis, IN 46228
 317-257-6811
 317-257-1590 fax
 sales@McLeanParts.net

For exterior mounting with 115/230 VAC power input shown.
 For all drawings of SpectraCool air conditioner models and to download 2D or 3D CAD files, visit www.McLeanParts.net.